

RSMC

Reproductive Sciences Medical Center



# Table of Contents



<b>About Us .....</b>	<b>1</b>
<b>Meet the Team .....</b>	<b>2</b>
Dr. David Harari .....	2
Dr. Minh Ho .....	3
Dr. Maria Castillo .....	4
Kevin Oum, PhD .....	5
<b>Our Philosophy .....</b>	<b>7</b>
<b>Why Choose Us? .....</b>	<b>8</b>
<b>Signature Procedures .....</b>	<b>10</b>
<b>List of Procedures.....</b>	<b>12</b>
<b>Success Stories .....</b>	<b>14</b>
<b>Contact Information and Directions .....</b>	<b>17</b>
<b>Glossary.....</b>	<b>18</b>





# About Us

## A Leader in Fertility Options

### We Help Build & Grow Families

At Reproductive Sciences Medical Center, we strive to provide a seamless journey by offering the necessary resources and care to ensure a successful path to parenthood.

We proactively serve and satisfy our clients and patients by demonstrating compassion to their needs while delivering quality services with the utmost professionalism.

We are dedicated to working together to create a sustainable, competitive advantage that leads the industry.



**Seamless  
Journey**



**Successful**  
Path to  
**Parenthood**



[fertile.com](https://fertile.com)

RSMC San Diego  
3661 Valley Centre Dr., Suite 100  
San Diego, CA 92130  
858-436-7186

RSMC Irvine  
Coastal Fertility Medical Center  
15500 Sand Canyon Avenue, Suite 100  
Irvine, CA 92618  
949-726-0600

# Meet the Team



## Dr. David Harari

M.D., President, Chief Medical Officer

As a board-certified OB/GYN since 1986, Dr. Harari has treated many infertile couples over his career, utilizing surgical technologies such as robotics and minimally invasive procedures for the treatment of endometriosis, fibroids, and other gynecologic conditions.

Dr. Harari completed his residency at Scripps Mercy Medical Center in San Diego and has served on numerous hospital committees at both Mercy and Sharp hospitals. He was a member of the Sharp Mary Birch OBGYN Supervisory Committee and the Minimally Invasive Surgical Committee of Excellence. He is currently a member of the American College of OBGYN and American Association of Gynecologic Laparoscopy.

Dr. Harari is an expert in helping patients with infertility who wish to use a surrogate, as well as patients who desire family planning options, such as sibling spacing, fertility preservation, gender selection and more. His specialties include infertility and gynecology-related disorders, such as fibroids, endometriosis and perimenopause.

*"It's very important to me that we provide individualized and personalized care to our clients. I am committed to making my patients feel comfortable and confident in my care. I treat my patients with sincerity and compassion. I ensure that they have all their questions answered to make sure that they are fully-informed before I present the treatment options that are available and work best for them."*



fertile.com

RSMC San Diego  
3661 Valley Centre Dr., Suite 100  
San Diego, CA 92130  
858-436-7186

RSMC Irvine  
Coastal Fertility Medical Center  
15500 Sand Canyon Avenue, Suite 100  
Irvine, CA 92618  
949-726-0600

# Meet the Team

## Dr. Minh Ho

M.D., F.A.C.O.G.



Dr. Ho is a board-certified OB/GYN and board-certified in Reproductive Endocrinology and Infertility. Dr. Ho has over 30 years of experience and is very proficient in treating patients of all backgrounds but specializes in treating patients of Asian descent. He has assisted elite clientele, including authoritative government officials and high-end celebrities in Vietnam.

Dr. Ho came to the U.S. from Vietnam as a refugee in 1979. Within three years, he was accepted into the University of Miami, Miller School of Medicine and graduated with an M.D. in 1986. He, then, completed his residency at the world-renowned Parkland Memorial Hospital of The UT Southwestern Medical Center, where he invented a patented double-clamp umbilical cord cutter.

After completing his residency in 1990, Dr. Ho moved to San Diego and joined a group practice at Kaiser Permanente. He later began his fellowship specializing in Reproductive Endocrinology and Infertility at UC San Diego, where he worked under the supervision of the Nobel Laureate Candidate, Dr. Samuel Yen. In 1994, with a special grant from the NIH, he served a year as a guest research scientist.

Dr. Ho specializes in helping patients with immunological disorders as well as patients who are of advanced maternal age and/or have endometriosis.

*“I’ve been nicknamed the “nicest gentlemen in the west” because I treat my patients like family. I take a very personal approach to each couple or individual I meet. No patient is alike and neither is their treatment. With customization for every patient, attention to detail is crucial. I want every patient to have the best quality of care, and I do everything I can to create a successful outcome. I am not just a physician. I’m also an artist (a musician, poet and writer). This side of me allows me to treat my patients more with my heart. I like to think it’s a combination of heart, mind and skill.”*



fertile.com

RSMC San Diego  
3661 Valley Centre Dr., Suite 100  
San Diego, CA 92130  
858-436-7186

RSMC Irvine  
Coastal Fertility Medical Center  
15500 Sand Canyon Avenue, Suite 100  
Irvine, CA 92618  
949-726-0600

# Meet the Team

## Dr. Maria Castillo

M.D., F.A.C.O.G.



Dr. Maria L. Castillo, a highly accomplished professional, brings a warm and professional approach to her practice. As a dedicated Obstetrician and Gynecologist, she is board certified by the prestigious American Board of Obstetricians and Gynecologists.

Dr. Castillo is also a distinguished Fellow of the esteemed American College of Obstetricians and Gynecologists (ACOG).

With a commitment to providing exceptional care, Dr. Castillo maintains affiliations with renowned medical institutions. She is proudly affiliated with Sharp Mary Birch Hospital for Women and Newborns, Pomerado Hospital, Scripps Memorial Hospital LA Jolla, and Sharp Grossmont Hospital. These affiliations allow her to offer her patients the highest standard of care in a supportive and advanced medical environment.

Dr. Castillo earned her esteemed M.D. degree from Wayne State in Detroit, Michigan.

She then pursued her Residency in Obstetrics & Gynecology at Henry Ford Hospital, also in Detroit. With a passion for education and mentorship, she served as the Site Director of Obstetrics and Gynecology in Berkley, Michigan. Furthermore, she played an integral role as a teaching faculty member in the Department of Obstetrics and Gynecology at Providence Hospital in Southfield, Michigan.

Dr. Castillo's warm and professional demeanor, combined with her extensive qualifications and experience, make her an exceptional choice for individuals seeking comprehensive obstetric and gynecological care.

*"I work to provide patients with the opportunity to take an active role in their care with an individualized treatment plan. In rendering complete gynecology, obstetrics, and infertility services. And provide comprehensive quality health care to families utilizing skills in obstetrics and gynecology."*



fertile.com

RSMC San Diego  
3661 Valley Centre Dr., Suite 100  
San Diego, CA 92130  
858-436-7186

RSMC Irvine  
Coastal Fertility Medical Center  
15500 Sand Canyon Avenue, Suite 100  
Irvine, CA 92618  
949-726-0600

# Meet the Team



## Kevin Oum: Ph. D., HCLD/CC, EMB

Dr. Kevin Kiboong Oum started his career as the Scientific Director at the Columbia University Fertility Center in New York and is now the Lab Director at Reproductive Sciences Medical Center.

His ICSI research in 1993, (while ICSI was still a new skill to the embryology field) earned him recognition by the American Society for Reproductive Medicine, for his success with Vitricification of Human Blastocyst Embryos. Recognizing his determination, Columbia University invited him to collaborate on other similar projects.

Dr. Oum received his Ph.D. in Animal Reproduction at the graduate school of Konkuk University in Seoul. He later became a professor at Choongmoon Medical School and several other colleges and graduate schools in Korea, teaching human embryology, cell biology and genetic engineering.

Since moving to the United States, Dr. Oum has become a board-certified High-complexity Clinical Laboratory Director (HCLD) for clinical laboratories and is a Clinical Consultant for the American Board of Bioanalysis (ABB). He is also a member of the American Society of Reproductive Medicine, American Association of Bioanalysts and Society of Reproductive Biologists Technologists.

Dr. Oum specializes in Intracytoplasmic Sperm Injection (ICSI), Embryo Biopsy, Surgical Sperm Retrieval, and Cryopreservation and has worked in the some of the largest fertility centers in Korea and the United States.



fertile.com

RSMC San Diego  
3661 Valley Centre Dr., Suite 100  
San Diego, CA 92130  
858-436-7186

RSMC Irvine  
Coastal Fertility Medical Center  
15500 Sand Canyon Avenue, Suite 100  
Irvine, CA 92618  
949-726-0600



# Meet the Team

## *Dr. Oum's Patient Care Commitment:*

*"My commitment is to provide the most complete care for our patients, so they have the best possible chance at creating the family size they desire. We are constantly seeking ways to improve to ensure we have the world's greatest system to give our patients the best quality of care in the industry."*

*I strive to put patients at ease while they are here by educating them on each procedure and answering any questions they may have. My goal is to educate our patients so they can make the best decision for their own care with guidance from our medical team.*

*On behalf of our team and laboratory, we are 100% committed to our patients and are available 24/7 to care for them according to each individual's needs, which sometimes means showing up to the lab very early in the morning (~6am) or the middle of the night (~1am). As highly educated professionals, we strive to be technically flawless and prioritize accuracy and compassion for each patient."*



fertile.com

RSMC San Diego  
3661 Valley Centre Dr., Suite 100  
San Diego, CA 92130  
858-436-7186

RSMC Irvine  
Coastal Fertility Medical Center  
15500 Sand Canyon Avenue, Suite 100  
Irvine, CA 92618  
949-726-0600



# Our Philosophy

## Under One Roof

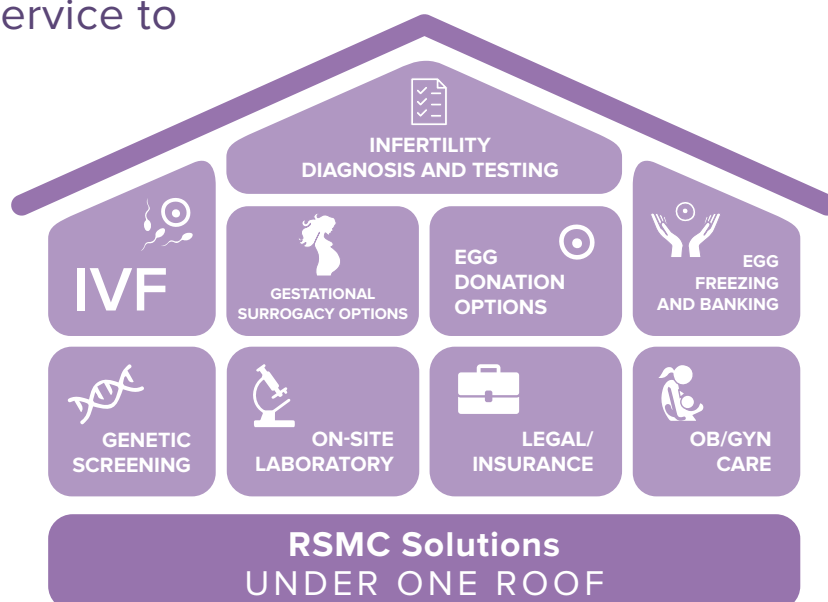
RSMC offers a comprehensive, end-to-end solution to all fertility challenges under one roof.

Our services include infertility diagnosis and testing, IVF treatments, surrogacy, egg donation, personalized OB/GYN care and legal counsel.

You will receive the very best care without having to be shuttled from one specialist to another.

Our Guarantee Program allows patients to enter the process with confidence and financial peace of mind.

RSMC never declines service to patients regardless of nationality, sexual orientation, or marital status.



fertile.com

RSMC San Diego  
3661 Valley Centre Dr., Suite 100  
San Diego, CA 92130  
858-436-7186

RSMC Irvine  
Coastal Fertility Medical Center  
15500 Sand Canyon Avenue, Suite 100  
Irvine, CA 92618  
949-726-0600

# Why Patients Choose Us?



RSMC is the world's only "One-Stop Service Model" for IVF treatment, integrating all necessary components into one location. With our comprehensive model and on-site laboratory, we not only increase our IVF success rate, but also reduce the cost and time spent by patients, making it even easier for them to achieve their dreams of parenthood. We provide the most comprehensive solutions to infertility and its obstacles.

Since 1995, our team has successfully performed more than 4,000 IVF cycles, and 1,500 surrogacy and egg donation cycles. Our Reproductive Endocrinologists have a combined experience of more than 80 years.



[fertile.com](https://fertile.com)

RSMC San Diego  
3661 Valley Centre Dr., Suite 100  
San Diego, CA 92130  
858-436-7186

RSMC Irvine  
Coastal Fertility Medical Center  
15500 Sand Canyon Avenue, Suite 100  
Irvine, CA 92618  
949-726-0600

# Why Patients Choose Us?



## IVF Guarantee Program

RSMC offers an IVF Guarantee Program to qualified patients. This program gives intended parents additional confidence before their treatment starts. If you qualify for and are accepted into the program and find that you are not successfully pregnant\*\*, you will be refunded 100% or part of the treatment fees you have paid. While IVF has proven to be a very successful treatment option, some patients with certain conditions may require multiple cycles to become pregnant.

The program offers multiple prepaid cycles at a flat rate. The services include: All consultations (except the initial consultation), monitoring for each cycle, egg retrieval, embryo transfer, cryopreservation, and the first year of embryo storage.

*\*\*Safely past the first trimester*

## What is Infertility?

The Office on Women's Health defines infertility as "not being able to get pregnant after one year of trying (or six months if a woman is 35 or older)." Infertility currently affects 50 to 80 million people worldwide, including both men and women.

- One-third of these infertility cases are due to female infertility.
- One-third are due to male infertility
- One-third of these cases include infertility in both partners or can be attributed to unknown causes.

To help determine the main cause of infertility, our skilled physicians evaluate our patients through thorough infertility assessments and testing.

Aside from couples facing infertility, other individuals such as single men and women or gay and lesbian individuals also seek fertility care. Reproductive Sciences Medical Center is LGBTQ-friendly and welcome any and all seeking fertility treatment. We specialize in difficult cases and believe that everyone deserves a chance to achieve the family of their dreams.



fertile.com

RSMC San Diego  
3661 Valley Centre Dr., Suite 100  
San Diego, CA 92130  
858-436-7186

RSMC Irvine  
Coastal Fertility Medical Center  
15500 Sand Canyon Avenue, Suite 100  
Irvine, CA 92618  
949-726-0600

# Signature Procedures



## In vitro fertilization (IVF)

The term IVF is often used to refer to the entire process by which a woman becomes pregnant using Assisted Reproductive Technology (ART). This includes ovarian stimulation, oocyte retrieval, in vitro fertilization, embryo transfer and embryo/oocyte cryopreservation. To improve our services and patient care, we have established over 40 selected protocols for the IVF process, which can translate into hundreds of personalized treatments.

The Process of IVF Treatment:

- 1. Stimulation of the Ovaries:**

A woman will administer injectable medications comprised of hormones that are naturally produced in the body, to stimulate the ovaries and produce eggs.

- 2. Egg Retrieval and Sperm Collection:**

Through a minimally invasive procedure, the physician will retrieve the eggs in each ovary. During this phase the sperm is also collected. The sperm can be frozen or fresh and can come from a donor or the intended father.

- 3. Fertilization and Embryo Transfer:**

After both the eggs and the sperm are prepared, our embryologist will fertilize the egg. After 5 to 6 days of embryo development, the embryo is transferred into the surrogate mother or intended mother.

## Egg Donor Option

Our extensive donor program and egg bank, consisting of a wide variety of international and domestic donors, allows intended parents to find their perfect match. Using our egg bank puts intended parents in complete control of their timeline, since banked eggs are available for immediate use. Our donor eggs are frozen through vitrification and stored in our on-site laboratory, making the journey to parenthood shorter and less risky. In addition, our matching program assures parents can select the characteristics most important to them. With a fresh donor, they can ask the donor any questions they may have.



fertile.com

RSMC San Diego  
3661 Valley Centre Dr., Suite 100  
San Diego, CA 92130  
858-436-7186

RSMC Irvine  
Coastal Fertility Medical Center  
15500 Sand Canyon Avenue, Suite 100  
Irvine, CA 92618  
949-726-0600



# Signature Procedures



## Gestational Surrogacy Option

With the largest program in the nation, prospective parents can start their path to parenthood with little to no wait time. Additionally, our high surrogacy pregnancy success rate offers confidence and peace of mind.

### Why Choose RSMC for Surrogacy?

- High Pregnancy Success Rate
- Comprehensive Matching Process
- Stringent Surrogate Screening and Selection
- OB/GYN Controlled Pregnancy
- Dedicated Personal Support
- Clear Legal Guidelines



*Intended Parents travel from around the world to work with RSMC.*



fertile.com

RSMC San Diego  
3661 Valley Centre Dr., Suite 100  
San Diego, CA 92130  
858-436-7186

RSMC Irvine  
Coastal Fertility Medical Center  
15500 Sand Canyon Avenue, Suite 100  
Irvine, CA 92618  
949-726-0600

# Comprehensive List of Services and Treatments

## Intrauterine insemination (IUI)

is a fertility treatment dedicated to increasing the number of sperm that reach the fallopian tubes. IUI is most commonly used for men with low sperm count or decreased sperm mobility.

## Infertility Diagnosis and Testing

involves helping patients understand their fertility. Through evaluations and testing, our skilled professionals help guide patients through the infertility maze.

## Intracytoplasmic sperm injection (ICSI)

is one of the IVF procedures used to treat infertility. ICSI involves injecting a single sperm cell directly into the cytoplasm of an egg.

## Preimplantation genetic diagnosis (PGD)

can detect single gene defect disorders that can result in diseases.

## Preimplantation genetic screening (PGS)

tests the embryos' chromosomes, detecting any abnormalities.

## Egg and Embryo Freezing

are for prospective mothers who would like to preserve their eggs or embryos. The eggs and/or embryos are frozen for later use, preserving their quality.

## Frozen Embryo Transfer

is a procedure in which intended parents, who are ready to grow their family tree, will thaw previously frozen embryos and transfer them into the woman's uterus.



# Comprehensive List of Services and Treatments

## Sperm Cryopreservation

is a type of fertility preservation, where prospective fathers freeze and store their sperm for later use.

## Microsurgical Epididymal Sperm Aspiration (MESA)

is performed on men who have trouble producing an adequate amount of sperm or have a blockage in their testicle.

## Assisted Embryo Hatching

involves creating a small hole in the outer lining of an embryo to increase the rate of implantation during IVF.

## Legal Department:

RSMC has a legal department that is well-versed in third party production and contracting.

## Extensive OB/GYN Network:

Our patients have access to our county wide OB/GYN network for prenatal care.



fertile.com

RSMC San Diego  
3661 Valley Centre Dr., Suite 100  
San Diego, CA 92130  
858-436-7186

RSMC Irvine  
Coastal Fertility Medical Center  
15500 Sand Canyon Avenue, Suite 100  
Irvine, CA 92618  
949-726-0600

# Success Stories



*Damon and Rick  
Los Angeles, CA*

When my partner and I decided we were ready to build a family, we didn't exactly feel 'welcome' by the first two clinics we visited. But when we met the great doctor and the rest of the staff at RSMC, we knew they were as enthusiastic about our family as we were.

*Ned and Tammy H.  
Chicago, IL*

Like a lot of people, we were nervous about what we could afford when the news about the economy just kept getting worse and worse. But when we realized we had a financing option, and that it was so simple to use, we agreed we couldn't put off our family anymore.



*Y.L.  
San Diego, CA*



Because I am Chinese and grew up in a medical family, I have used many Chinese therapies to try to overcome infertility issues. However, after 6 years of trying and numerous Chinese doctors (Acupuncture, herbs, etc.), there was still no success in sight. We went to another IVF clinic and did not get pregnant in the first cycle.



[fertile.com](https://fertile.com)

RSMC San Diego  
3661 Valley Centre Dr., Suite 100  
San Diego, CA 92130  
858-436-7186

RSMC Irvine  
Coastal Fertility Medical Center  
15500 Sand Canyon Avenue, Suite 100  
Irvine, CA 92618  
949-726-0600



# Success Stories



*Skye and James G.  
San Diego, CA*

My husband and I struggled for over a year to have children before we went to visit RSMC. The IVF process is grueling on all parties involved. The center's staff were amazing. They made us feel right at home and so comfortable with the process. I was lucky enough to get pregnant the first time around.

*Mark and Stacey G.  
Laguna Beach, CA*

We couldn't be more pleased with the RSMC staff and our outcome! We are so thrilled to have 2 healthy babies from just 1 viable embryo! What a tribute to the extraordinary skills of the doctors and the whole RSMC staff. We wouldn't go anywhere else if we try again and will continue to refer our friends and rave about our experience.

Thank you for our miracle babies!  
Without you, our family wouldn't be the same.  
We will forever be grateful!



fertile.com

RSMC San Diego  
3661 Valley Centre Dr., Suite 100  
San Diego, CA 92130  
858-436-7186

RSMC Irvine  
Coastal Fertility Medical Center  
15500 Sand Canyon Avenue, Suite 100  
Irvine, CA 92618  
949-726-0600

# Success Stories



Jack and Alyssa  
Dana Point, CA

RSMC Team,  
Jack and I wanted to write today to say thank you. Three years ago, you gave us our beautiful twin daughters Jacqueline Rose and Katy Bell. We had to use an egg donor, but you didn't think a surrogate was necessary.

H.,  
San Diego, CA

We searched for the best assistance with our fertility issues and found it with RSMC team. We could not have been treated better throughout the journey, which can be very emotional at times, but the care we received by RSMC and team made all the difference. And, in the end, we were blessed with a beautiful and healthy baby boy!



fertile.com

RSMC San Diego  
3661 Valley Centre Dr., Suite 100  
San Diego, CA 92130  
858-436-7186

RSMC Irvine  
Coastal Fertility Medical Center  
15500 Sand Canyon Avenue, Suite 100  
Irvine, CA 92618  
949-726-0600

# Contact Information

## RSMC San Diego

3661 Valley Centre Dr., Suite 100  
San Diego, CA 92130

858-436-7186

## RSMC Irvine

Coastal Fertility Medical Center  
15500 Sand Canyon Avenue, Suite 100  
Irvine, CA 92618

949-726-0600

Visit us online:

[www.fertile.com](http://www.fertile.com)

Email:

[info@fertile.com](mailto:info@fertile.com)



[fertile.com](http://fertile.com)

RSMC San Diego  
3661 Valley Centre Dr., Suite 100  
San Diego, CA 92130  
858-436-7186

RSMC Irvine  
Coastal Fertility Medical Center  
15500 Sand Canyon Avenue, Suite 100  
Irvine, CA 92618  
949-726-0600

# Glossary

## A

### Assisted Activation of Eggs after ICSI

is a laboratory procedure in which eggs that have been injected with a sperm (undergone ICSI) are treated with a chemical agent that induces egg activation and triggers the fertilization process. This procedure is limited to those few couples that have low ICSI fertilization rates.

### Assisted Hatching

is a laboratory micromanipulation procedure in which an acidic solution is used to thin and/or create a small hole in the outer shell of the embryo to facilitate hatching of the embryo. This may facilitate implantation of the embryo into the uterine wall.

## D

### Donor Eggs (Oocytes)

are eggs retrieved from a young, fertile woman. Donor eggs are used to generate embryos an individual or couple in need of healthier and younger eggs.

### Donor Embryos

are cryopreserved embryos that have been donated by a patient/couple to a known recipient(s) or donated to RSMC for use by an anonymous recipient(s) to establish a pregnancy.

## E

### Egg (Oocyte) Cryopreservation

is the freezing and storage of oocytes (unfertilized eggs) for possible future use in an IVF/ICSI cycle.





# Glossary

## Egg (Oocyte) Retrieval

is the procedure for recovering eggs from the ovaries. Eggs are collected from ovarian follicles using transvaginal ultrasound-guided needle aspiration.

## Embryo Biopsy

is the removal of a sample of cells from an embryo to evaluate the genetic material of the embryo (see PGS/PGD).

## Embryo Cryopreservation

is the freezing and storage of fertilized eggs and embryos in liquid nitrogen for possible future pregnancy attempts.

## Endometrial Biopsy

is a gentle scratching of the uterine lining with a plastic catheter. The local endometrial injury prior to an embryo transfer cycle is thought to enhance embryo implantation.

## Embryo Transfer

is the transfer of one or more embryos into the uterus through the cervix.

## F

## Frozen Embryo Transfer (FET)

involves thawing previously cryopreserved (frozen) embryos, then transferring them into the uterus through the cervix.



# Glossary

## G

### Gestational Surrogacy

involves the transfer of embryos into another woman's (surrogate's) uterus for the purpose of carrying a pregnancy.

## H

### Hysteroscopy

is a procedure that allows the physician to look inside a woman's uterus to diagnose and treat uterine abnormalities (abnormal bleeding, polyps, fibroids, adhesions). A thin, flexible lighted telescope (hysteroscope) is inserted into the vagina to examine the cervix and uterine cavity.

## I

### Intracytoplasmic Sperm Injection (ICSI)

is a laboratory micromanipulation procedure in which a single sperm is injected directly into the cytoplasm of an egg in order to achieve fertilization. This procedure is generally reserved for male factor patients.

### Intrauterine Insemination (IUI)

involves the injection of motile sperm, which have been processed in the laboratory, into a woman's uterus through the cervix at the time of ovulation. This procedure is often used for insemination with donor sperm and is reserved for women with at least one open Fallopian tube.



# Glossary

## In Vitro Fertilization (IVF)

involves extracting a woman's eggs, combining them with a man's sperm to achieve fertilization, and then transferring the resulting embryos into a woman's uterus through the cervix. Usually, one to four embryos are transferred with each cycle.

## M

## Microsurgical Epididymal Sperm Extraction (MESA)

is a procedure used in conjunction with ICSI in which sperm are obtained from the epididymis of men with obstructive azoospermia (a blockage in the sperm delivery system).

## Mock Transfer

is the placement of a transfer catheter into the uterine cavity prior to the actual embryo transfer. This procedure allows the physician to measure the cavity length and cervical/uterine position.

## P

## Preimplantation Genetic Screening/Diagnosis (PGS/PGD)

involves testing one or more cells removed from the preimplantation embryo for genetic abnormalities and/or gender selection. PGS screens for numerical chromosomal abnormalities (i.e., aneuploidy) and PGD checks for a specific abnormal gene that can cause an inherited disorder.



# Glossary

## S

### Sperm Cryopreservation

is the freezing and storage of sperm (ejaculated, epididymal or testicular) for possible future use in an IVF or ICSI cycle.

## T

### Testicular Sperm Extraction (TESE)

is a procedure used in conjunction with ICSI in which sperm are aspirated or retrieved directly from the testes of men with azoospermia (absence of sperm in the semen).

## U

### Uterine Perfusion

involves the injection of a growth factor into the uterine cavity for the purpose of increasing the endometrial lining thickness and/or aiding implantation.

## V

### Vitrification

is a fast-freezing technique used in the IVF laboratory to cryopreserve eggs and embryos.







# RSMC

Reproductive Sciences Medical Center



[fertile.com](http://fertile.com)

RSMC San Diego  
3661 Valley Centre Dr., Suite 100  
San Diego, CA 92130  
858-436-7186

RSMC Irvine  
Coastal Fertility Medical Center  
15500 Sand Canyon Avenue, Suite 100  
Irvine, CA 92618  
949-726-0600